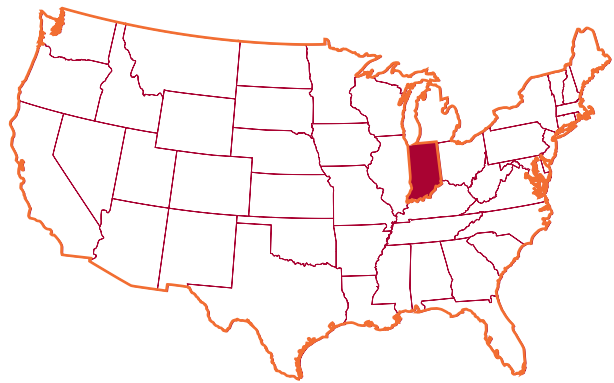


INDIANA UNIVERSITY

DISCOVER YOUR FUTURE





A PICTURE-PERFECT CAMPUS IN THE HEART OF THE MIDWEST

IU is in the center of Bloomington—a city of about 80,000 people. Shop on Kirkwood Avenue. Enjoy international cuisine. See great live music and theatre.

You can also explore miles of forest and lakeside trails in and close to town, including Brown County State Park and Lake Monroe. Craving a day or weekend adventure in a bigger city? You can get to Indianapolis by car or bus in an hour; Cincinnati, Ohio, or Louisville, Kentucky, in just over two; and Chicago, Illinois, or St. Louis, Missouri, in four.



POTENTIAL UNLOCKED

Discover you at your best. Indiana University Bloomington offers you endless opportunities to learn, experience new things, and explore the future you want. **Plug into IU's vast global network—790,000 alumni and counting.**

CONTENTS

- Location • Inside gatefold
- Academics • 2
- Majors • 4
- Experiences • 6
- Careers • 8–11
- Campus • 12
- Traditions • 14
- Community • 16
- Study abroad • 18
- Alumni • 20
- Apply, cost, and scholarships • 22–23
- Contact • 24

◀ *Seattle native Jesse Morris, a Kelley School of Business finance major, combines his academic interest with service through Mu Beta Lambda Business Fraternity, which supports minorities in business. Learning through unique experiences is key for Jesse, who studied NASA-curated coursework as part of the Washington Aerospace Scholars program.*



TREAD NEW PATHS

An IU education empowers you to make your own path. Personalize your curriculum by combining programs, specializing, or creating your own major or minor. Prepare for the careers of tomorrow. Hone the essential and timeless career skills employers want. Create or discover something new. Be taught, inspired, and mentored by our expert faculty.

3,600+
students study abroad
each year

18:1
student-faculty
ratio

80+
languages taught,
the most in the country

64%
of undergraduate
classes have fewer
than 30 students

◀ *The Luddy School of Informatics, Computing, and Engineering's highly specialized intelligent systems engineering program drew Agness Lungu to IU from her home in Lusaka, Zambia. Passionate about artificial intelligence and robotics, Agness studied engineering and mathematics and graduated in May 2024.*



200+ MAJORS - CHOOSE ONE OR EXPLORE

Still plotting your path? Declare your major as Exploratory and take time to investigate your interests. You'll be assigned an advisor at Advising and Major Exploration Services (AMES) who can help you find your best fit. To view all majors, visit go.iu.edu/majors. Or design your own here: go.iu.edu/imp.

*Certificate only

**Jointly administered by the College of Arts and Sciences and the O'Neill School of Public and Environmental Affairs

***Jointly offered by the Hamilton Lugar School of Global and International Studies and the Luddy School of Informatics, Computing, and Engineering

♦Co-major only

COLLEGE OF ARTS + SCIENCES

college.indiana.edu

Advanced Chinese Language and Culture*

African American and African Diaspora Studies

African American and African Diaspora Studies/English

African American and African Diaspora Studies/History

African American and African Diaspora Studies/Religious Studies

African American and African Diaspora Studies/Sociology

American Studies

Animal Behavior

Anthropology

Anthropology/Linguistics

Art History

Astronomy and Astrophysics

Atmospheric Science

Biochemistry

Biology

Biotechnology

Business German*

Chemistry

Classical Civilization

Classical Studies (Greek, Latin)

Clinical Psychological Science

Cognitive Science

Comparative Literature

Computational Linguistics

Computer Science

Criminal Justice

Dance

Dutch Studies*

Earth and Atmospheric Sciences

Earth Science

Economics

Economics/Mathematics

Economics/Political Science

English

Environmental and Sustainability Studies**

Environmental Geoscience

Environmental Science**

Folklore and Ethnomusicology

Food Studies*

French

French and Francophone Global Studies*

Gender Studies

Geographic Information Systems and Remote Sensing*

Geography

Germanic Studies

Global Human Diversity*

History

Human Biology

Individualized Major Program

Italian

Jewish Studies

Liberal Arts and Management*

Liberal Studies

Linguistics

Management and Human Organization

Mathematics

Medieval Studies*

Microbiology

Molecular Life Sciences

Musical Theatre

Neuroscience

Philosophy

Philosophy/Political Science

Philosophy/Religious Studies

Physics

Political and Civic Engagement*

Political Science

Portuguese

Pre-Professional Speech-Language Pathology*

Psychology

Religious Studies

Slavic and East European Languages and Cultures

Already know what you'd like to study? Save time and money through accelerated programs, which allow you to earn your bachelor's and master's degrees back to back in as little as five years. go.iu.edu/grad

Social Research in Health and Medicine*

Sociology

Spanish

Spanish and Hispanic Cultures for Global Business*

Speech, Language, and Hearing Sciences

Statistics

TESOL and Second Language Acquisition*

Theatre and Drama

The Media School; the Eskenazi School of Art, Architecture and Design; and the Hamilton Lugar School of Global and International Studies are part of the College of Arts and Sciences.

ESKENAZI SCHOOL OF ART, ARCHITECTURE + DESIGN

eskenazi.indiana.edu

Comprehensive Design

Fashion Design

Interior Design

Merchandising

Studio Art

HAMILTON LUGAR SCHOOL OF GLOBAL AND INTERNATIONAL STUDIES

hls.indiana.edu

African Studies*

Central Eurasian Studies

Cybersecurity and Global Policy***

East Asian Languages and Cultures

East Asian Studies

European Studies*

Global Service and Peace Corps Preparation*

India Studies

Indic Languages and Cultures*

International Law and Institutions

International Studies

Islamic Studies*

Latin American and Caribbean Studies*

Middle Eastern Languages and Cultures

JACOBS SCHOOL OF MUSIC

music.indiana.edu

Analog Audio Electronics*

Audio Engineering and Sound Production

Ballet

Composition

Historical Performance

Jazz Studies

Music Education

Performance

Rock History*

Students majoring in ballet, composition, historical performance, jazz studies, or performance have the additional option of pursuing an outside field offered by another school or college at IU Bloomington.

KELLEY SCHOOL OF BUSINESS

kelley.iu.edu

Accounting

Business Analytics ♦

Digital and Social Media Business Applications ♦

Digital Technology Management ♦

Economic Consulting

Entrepreneurship and Corporate Innovation

Finance

Information Systems

International Business ♦

Law, Ethics, and Decision Making ♦

Leading Diverse, Equitable, and Inclusive Organizations ♦

Management

Marketing

Operations Management

Professional Sales

Public Policy Analysis

Real Estate

Supply Chain Management

Sustainable Business ♦

LUDDY SCHOOL OF INFORMATICS, COMPUTING, AND ENGINEERING

luddy.indiana.edu

Computer Science

Cybersecurity and Global Policy***

Data Science

Informatics

Intelligent Systems Engineering

O'NEILL SCHOOL OF PUBLIC AND ENVIRONMENTAL AFFAIRS

oneill.indiana.edu

Applied Research and Inquiry*

Arts Administration*

Arts Management

Environmental and Sustainability Studies**

Environmental Management

Environmental Science**

Healthcare Management and Policy

Human Resource Management

Law and Public Policy

Management

Nonprofit Leadership Alliance* (externally awarded)

Nonprofit Management*

Nonprofit Management and Leadership

Policy Analysis

Public Affairs*

Public Financial Management

Public Health*

Public Management*

Public Management and Leadership

Urban Studies*

SCHOOL OF EDUCATION

education.indiana.edu

Counseling and Student Services

Early Childhood Education (P–3)

Elementary Education (K–6)

Higher Education and Student Affairs*

Music Education (P–12)

Secondary Education (5–12), with content fields in:

- Chemistry
- Earth/Space Science
- Health
- Journalism
- Language Arts/English
- Life Science/Biology
- Mathematics
- Physics
- Social Studies

Special Education—Elementary (K–6)

Special Education—Secondary (5–12), with content fields in:

- Language Arts/English
- Mathematics
- Science

Visual Arts Education (P–12)

World Language Education (P–12), with content fields in:

- French
- German
- Latin
- Russian
- Spanish

SCHOOL OF NURSING

nursing.indiana.edu

Nursing

SCHOOL OF PUBLIC HEALTH-BLOOMINGTON

publichealth.indiana.edu

Community Health

Dietetics

Environmental Health

Epidemiology

Exercise Science

Fitness and Wellness

Human Development and Family Studies

Martial Arts*

Nutrition Science

Parks, Recreation, and the Outdoors

Recreational Therapy

Safety

Safety Management*

Sport Marketing and Management

Tourism, Hospitality, and Event Management

Underwater Resource Management*

Youth Development

SCHOOL OF SOCIAL WORK

socialwork.indiana.edu

Labor Studies

Social Work

THE MEDIA SCHOOL

mediaschool.indiana.edu

Cinematic Arts

Game Design

Journalism

Media

New Media and Interactive Storytelling*

DETERMINATION MEETS INSPIRATION



^ Keaton Weber, who graduated in May 2024, came to IU to pursue a degree in music education with a minor in conducting from the world-renowned Jacobs School of Music.



"I saw how many opportunities IU promised, so I took a chance and applied. I haven't looked back since!" Abby Teipen graduated in May 2024 with a B.S. in Biology from the College of Arts + Sciences at IU. She plans to continue her journey in biology by pursuing a Ph.D., building on the real-world, hands-on experience gained in her undergraduate research lab.



BECOME GLOBALLY MINDED

^ “The Hamilton Lugar School of Global and International Studies prepares students to be globally ready—from language skills, to research methodologies, to policy analysis,” says Kaitlin Scott. Before her 2023 graduation, she gained experience with the United Nations and did global work with the U.S. Department of Commerce.

SEE WHERE THE CLASS OF 2023 HAS PUT THEIR IU DEGREES TO WORK*

95%

of IU graduates were employed full time or part time, entered volunteer service or the military, or continued their education within six months of graduation

This figure uses information on 78% of bachelor's degree graduates in our undergraduate schools, not including the School of Nursing.

Full-time jobs in

27

countries and

42

states, including Washington, D.C.

RECRUITING AT IU IN 2022-23

100,000+

jobs available to IU students, posted by 10,000 employers

23

career fairs attended by 7,700+ students

2,500+

undergraduate students participated in on-campus interviews

450+

career workshops helped students explore options and build skills

81%

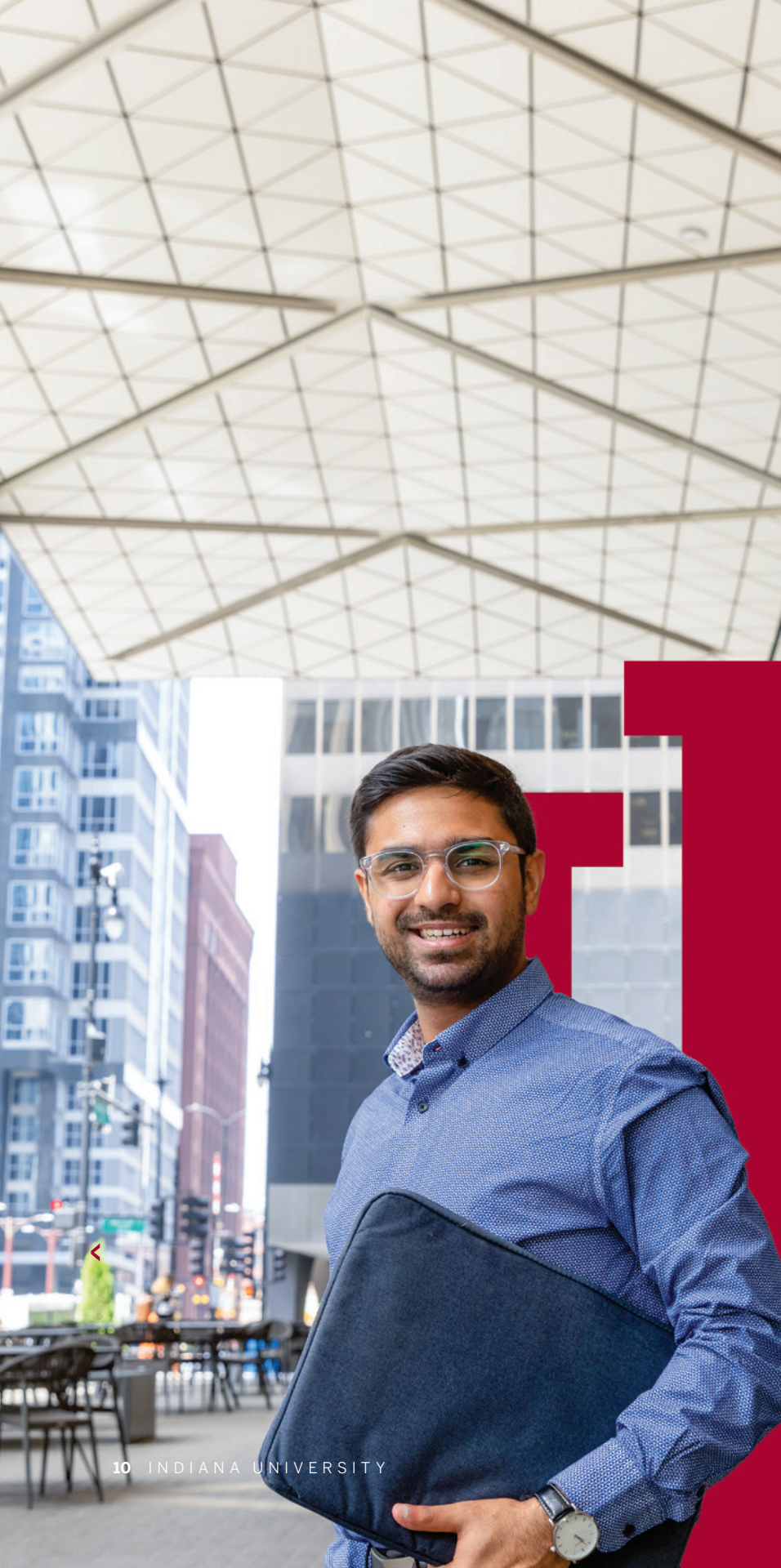
of applicants to law schools were admitted to at least one (national rate: 69.9%)

HIRING EMPLOYERS

Abercrombie & Fitch • Amazon • Deloitte • Eli Lilly and Company • Epic Systems Corporation • EY LLP • Goldman Sachs • Grant Thornton LLP • Insight Global • IU Health • JPMorgan Chase & Co. • Kohl's Corporation • Macy's • Monroe County Community School Corporation • Oracle Corporation • Procter & Gamble • PwC • Saks Fifth Avenue • Salesforce • Starbucks Corporation • State of Indiana • Target Corporation • United States Government

*The information on this page is from Career Services Metrics Committee and the Health Professions and Prelaw Advising (HPPLA) at IU Bloomington.





◀ A native of Bangkok, Thailand, Pavan Idnani was drawn to the globally recognized Luddy School of Informatics, Computing, and Engineering. Pavan graduated with a B.S. in Informatics in May 2024.

The summer before his senior year, he completed an internship at Ernst & Young in Chicago. “I now work for EY as a technology consultant—exactly what I studied for. IU and my professors really set me up for success.”

TEST-DRIVE YOUR FUTURE

WITH EXPERIENCES THAT WILL MAKE YOU STAND OUT

Research and real-world work experience are central to the way you'll learn. You will hone your ability to think critically and solve problems. These are skills that employers notice, and will help you excel after you're hired.

7,997

for-credit internships completed by IU undergrads in 2023–24, plus thousands more noncredit internships

INTERNSHIPS

Get meaningful practice in your future field, build your network of career contacts, and find out what kind of workplace suits you.

LEADERSHIP OPPORTUNITIES

Complete the Hoosier Leadership Program, serve in IU Student Government, direct a student organization, and more.

SERVICE

Enrich your life and help others through service-learning courses, IU Corps, alternative breaks, and student organizations.

HONORS PROGRAMS

Are you a high achiever? Honors programs give you access to uniquely structured and challenging courses and seminars, residential learning communities, and grants for research, internships, conferences, and creative activities.

You can become an honors student with admission to the Hutton Honors College or programs administered through your school or department.

CHART YOUR PATH

Connect with career coaches and advisors regularly to refine your plans for the future. They are there to help you consider career pathways and majors that align with your goals.

MORE WAYS TO GET HANDS-ON EXPERIENCE:

- Train for a financial services career in the Investment Banking Workshop.
- Devise solutions to global policy challenges in the IU Diplomacy Lab.
- Launch your research career in the Arts and Sciences Undergraduate Research Experience (ASURE) program.
- Report the stories of the day through the *Indiana Daily Student*, IU Student Television, and WIUX radio.
- Help nonprofits with technology in the Serve IT clinic.
- Teach students in different cultures through the Global Gateway for Teachers program.
- Debut your mini-collection in the IU Fashion Show.
- Prepare for advanced study and a career in law, medicine, or health through Health Professions and Prelaw Advising.

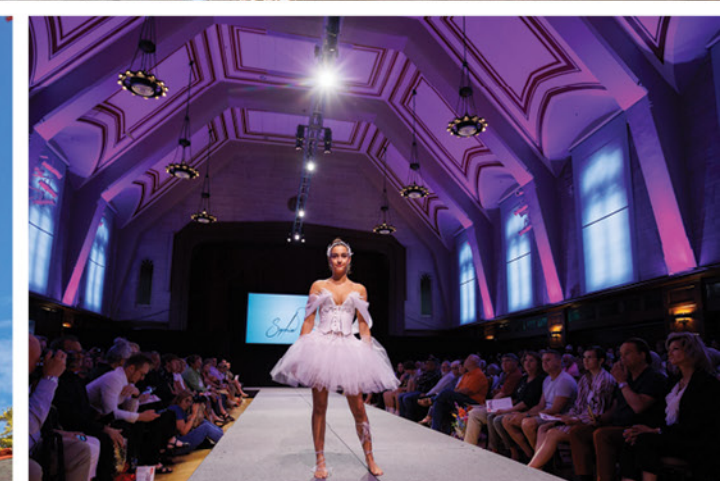


PICTURE PERFECT



WE'RE ONE OF THE MOST INSTAGRAMMED PLACES IN INDIANA

SEE FOR YOURSELF @IUBLOOMINGTON
AND PLAN YOUR VISIT: [GO.IU.EDU/VISIT](https://go.iu.edu/visit)





Letter by letter:
color run/walk,
Big Ten sports,
touching Herman
B Wells' hand for
good luck, Little
500, Traditional
Powwow,
Commencement,
performing arts,
community service,
Dance Marathon.

FEEL THE HOOSIER SPIRIT IN EVERY IU TRADITION

YOU'LL TREASURE OUR 200+ YEARS OF TRADITIONS
AND THEY'LL GIVE YOU AND YOUR FRIENDS REASONS
TO RETURN AS ALUMNI.



YOUR HOME AWAY FROM HOME



^ New students are required to live on campus at one of IU's 19 residence centers. You'll make your first IU friends here and have easy access to tutoring and advising.

You'll find your place in the IU family. Form deep bonds, explore what matters to you, and feel at home.

20+ LEARNING COMMUNITIES

Live with students who share one of your interests, like education, personal wellness, or the arts.

A SPACE FOR EVERYONE

From the LGBTQ+ Culture Center to the Neurodiversity Coalition, you'll find a place to connect with others who understand.

7 CULTURAL CENTERS AND INSTITUTES

Build a sense of belonging and learn more about other cultures.

750+ STUDENT ORGANIZATIONS

Have fun, build your network of connections, and deepen your interests.

WELCOME WEEK AND HOOSIER EXPERIENCE

Exciting activities. Time-honored traditions. Build a foundation for your entire IU experience.

MENTAL HEALTH LOOKS DIFFERENT ON EVERYONE

From the thrill of being on your own to feeling all alone, college can be so many things. Our priority is supporting you throughout your journey. mentalhealth.iu.edu

STUDENTS FROM 50 STATES AND 110 COUNTRIES

Our 36,000+ undergraduates and 10,000+ graduate students include people of all kinds.





It was definitely an eye-opening cultural experience.

Joey Bell, studied in London, United Kingdom
Media Management, B.A.
The Media School, 2023



THE WORLD IS YOUR CLASSROOM

GAIN A NEW PERSPECTIVE

There are 380+ flexible study abroad programs in over 70 countries that last anywhere from a few days to a few months. Every school at IU has a program—connect with Education Abroad to explore the options. Need- and merit-based scholarships make studying abroad affordable.

Plan your future:
go.iu.edu/abroad



I learned a lot about being uncomfortable without being uncomfortable.

Madigan Hogan, studied in Taipei, Taiwan
International Studies, B.S.
Hamilton Lugar School of Global and International Studies, 2024

IU'S ALUMNI NETWORK RUNS DEEP

790,000+ IU GRADUATES WILL SUPPORT YOU

IU alumni are everywhere, and they're eager to help another Hoosier. One of the world's largest alumni networks, they'll mentor you and connect you with opportunities—while you're a student and throughout your career.



JENNIFER BURNETT-ZIEMAN

At IU: Studied biology and economics as a pre-med, earning a B.A./B.S. in 2002.

After IU: A focus on public health in the Peace Corps

led Jennifer to providing HIV/AIDS education in Ghana. She then received a master's in public and international affairs from Princeton University in 2008, which she put to use in disease eradication in South Sudan. Currently she is director of monitoring, evaluation, and learning at Palladium.



LEAH JOHNSON

At IU: Studied journalism at The Media School, earning a B.A.J. in 2016.

After IU: Wrote *You Should See Me in a Crown* in 2020, which received a Stonewall

Book honor and was named as one of the top 100 young adult books of all time by *TIME* magazine. Her second book, *Rise to the Sun*, was released in 2021. Her third book, *Ellie Engle Saves Herself*, was released in 2023.



KENNETH GUERRA

At IU: Graduated with a B.S. in microbiology in 2016 before returning to the Maurer School of Law to receive his J.D. in 2019.

After IU: Uses his STEM background to focus on complex

patent litigation in the areas of biotechnology and pharmaceuticals before U.S. district courts and the U.S. Court of Appeals for the Federal Circuit.



JOHNATHON SHAFFER

At IU: Earned his B.S. in kinesiology at IU's School of Public Health in 2011. He was a member of Indiana Collegiate Emergency Medical Services, covering events such as the Little 500.

After IU: Now the neurotrauma consultant to IU Athletics and medical director of the IU Health Bloomington Spine Program, he attended a global medical education program through the University of Queensland in Brisbane, Australia, and Ochsner Clinic Foundation in New Orleans. In 2020, he landed a prestigious fellowship in sports neurology, neuromodulation, and interventional pain management at the Kerlan-Jobe Institute in Los Angeles.



Joshua Stewart's underwater research projects for his individualized marine biology major at IU inspired him to get his Ph.D. at Scripps Institution of Oceanography. He graduated in May 2010 as IU's first marine biology graduate, from the School of Health, Physical Education, and Recreation. He is now an assistant professor at Oregon State University.

HOW TO APPLY



go.iu.edu/applynow

APPLYING AS A TRANSFER STUDENT

There are many paths to becoming a student at IU Bloomington. Are you looking to transfer from another IU campus or a different college altogether? A current member of the military or a veteran? Maybe you're an adult looking to return to college or seeking a second undergraduate degree. There are special applications for each of these circumstances.

Find yours: go.iu.edu/learn

1. REVIEW OUR ADMISSIONS STANDARDS

See what high school courses you need to take to be college-ready.

<i>Fall 2024 admitted student test scores*</i>	<i>Middle 50%</i>	<i>Average/Median</i>
ACT (composite)	28–33	30
SAT (evidence-based reading and writing)	1230–1430	1324
High school GPA	3.73–4.00	3.98

2. KNOW OUR DEADLINES

November 1 is the early action deadline (non-binding) and the deadline for the highest scholarship consideration. To meet this deadline, you must submit a complete application for admission, including your official high school transcript, an essay, and self-reported or official SAT/ACT scores (if applicable*) by the following dates:

<i>Submit a complete application by:</i>	<i>Receive a response no later than:</i>
November 1	January 15
February 1	March 15

3. SUBMIT A COMPLETE APPLICATION

You have two options to apply: the Apply IU Application or the Common Application. Only one application will be accepted.

You also need to:

- **Submit your essay as part of your application.** You can choose from any of the essay prompts when applying through the Common Application. If you use Apply IU, please complete the essay portion.
- **Submit your official high school transcript.**
- **SAT or ACT scores (if applicable*).** If you took the SAT or ACT and would like to have your test scores considered as part of your application, share either your official or self-reported scores by one of our application deadlines.

*Admission to IU is test-optional and 46% of admitted students for fall 2024 opted to apply without test scores. Learn if this is the right path for you: go.iu.edu/test-optional

COST AND SCHOLARSHIPS

ESTIMATED COSTS FOR 2024–25

Estimates for full-time undergraduates enrolled in 40 total credit hours across the fall and spring semesters and the August and winter intersessions. Most courses are 3 credit hours.

Cost categories	Indiana residents	Nonresidents
Tuition and fees	\$12,142	\$41,890
Housing and food*	\$13,984	\$13,984
Total direct costs	\$26,126	\$55,874
Books and supplies*	\$1,250	\$1,250
Transportation*	\$954	\$954
Personal expenses*	\$2,270	\$2,270
Total indirect costs	\$4,474	\$4,474
Total cost of attendance	\$30,600	\$60,348

*Actual costs vary by student based on lifestyle choices, travel habits, and academic program.

1. COMPLETE THE FAFSA

In the fall of your senior year, review the steps in the financial aid process at studentcentral.indiana.edu. Your #1 to-do: submit your FAFSA as soon as possible. **(Our priority deadline is April 15.)**

2. LEARN ABOUT SCHOLARSHIPS AT IU

Visit scholarships.indiana.edu to discover a variety of scholarship opportunities based on academic achievement, interests, activities, and more. A select number of scholarships require ACT/SAT test scores. **For maximum consideration, submit a complete admission application by November 1 (including your official transcript, essay, and test scores, if applicable).**

Students are encouraged to complete the **IU Scholarships Application by February 1** on One.IU.edu to be considered for IU Bloomington scholarships. The application involves two steps: filling out an initial general application and then finding and applying to additional scholarship opportunities. Both steps are required for a complete application and IU must receive your FAFSA information by the application deadline for any need-based scholarships.

3. GET MONEYSMART

Set yourself up for financial wellness. Our MoneySmarts program helps you establish good financial habits, make informed financial decisions, and reduce your debt. Start at moneysmarts.iu.edu.

ACCOMPLISHED AND GLOBAL: OUR 2023 FRESHMAN CLASS

- 63% in the top quarter of their high school class
- 40% graduated high school with a 4.0 GPA or better
- 54% Indiana residents
- 41% students from other U.S. states
- 5% international students
- 20% from historically marginalized populations

YOUR NEXT ADVENTURE AWAITS

EXPLORE

admissions.indiana.edu

APPLY





go.iu.edu/applynow

VISIT

go.iu.edu/visit

CONNECT

812-855-0661
admissions@indiana.edu

-  [futurehoosiersfamilyfriends](#)
-  [IU_Admissions](#)
-  [IUAdmissions](#)
-  [IUAdmissions](#)



Indiana University will recruit, hire, promote, educate, and provide services to persons based upon their individual qualifications. Indiana University prohibits discrimination on the basis of age, color, disability, ethnicity, sex, gender identity, gender expression, genetic information, marital status, national origin, race, religion, sexual orientation, or veteran status. Indiana University is an equal opportunity and affirmative action employer and a provider of ADA services. Indiana University does not discriminate on the basis of sex in its educational programs and activities, including employment and admission, as required by Title IX. Questions or complaints regarding Title IX may be referred to the U.S. Department of Education Office for Civil Rights or the university Title IX coordinator. See Indiana University's Non-Discrimination/

Equal Opportunity/Affirmative Action policy, which includes contact information, at go.iu.edu/non-discrimination.

The Annual Security Reports, containing policy statements and crime statistics for Indiana University campuses, are available at protect.iu.edu/police-safety/annual-reports/index.html. You can request a physical copy by emailing IU Public Safety at iups@iu.edu.

Indiana University offers numerous resources to IU employees, students, and visitors who may need additional assistance while attending, visiting, and/or working for the university. For more information about support services to help you succeed at IU, visit ada.iu.edu.



INDIANA UNIVERSITY

BLOOMINGTON

